

A NOTE TO PARENTS:

Steps of Discipline:

In many cases, when unacceptable behavior is displayed, the child may simply need gentle redirection or a word of caution. Nursery volunteers do not use any form of physical discipline with the children. If problems do persist with a particular child, it will be brought to the attention of the nursery director who will then discuss the issue with the child's parents.

Illness:

Since young children's immune systems are more vulnerable than our own, it is inevitable that they will "catch cold" and contagious diseases from others. Although we can't totally isolate our children from sickness (or we'd never come to church) we do want to make every effort to minimize the spread of sickness in the nursery. Because our nursery is a busy communal place, children with infectious illness are asked not to enter the nursery. When a child becomes ill while in the nursery, the worker will notify the parents. Nursery volunteers are not able to administer medications.

Safety and First Aid:

There is a First Aid kit located in the nursery. Minor scrapes and bruises, will be attended to by the worker and brought to the parents attention when the child is picked up. The parents will be contacted immediately in the event of a major accident. In the case of a fire emergency the nursery children will be taken out of the building to a safe place where the parents can pick up their children. The designated meeting spot is the "Abbotsford Christian School" sign facing onto Old Clayburn Rd.

Volunteers:

The nursery is staffed with adult and youth volunteers. The director (Sarah Dueck) has ECE qualifications with a government license and valid First Aid. All volunteers are required to attend the "Plan to Protect" seminars, complete a volunteer screening application, and have a criminal record check done (for those 18 and over). Although we don't require parents to participate in our rotating schedule, you are welcome to and it would be very much appreciated.

THANK YOU!

Christian Life Community Church
35011 Old Clayburn Rd.

Phone: 604-853-4166

Fax: 604-852-7227

www.clcc.ca

Mailing Address:

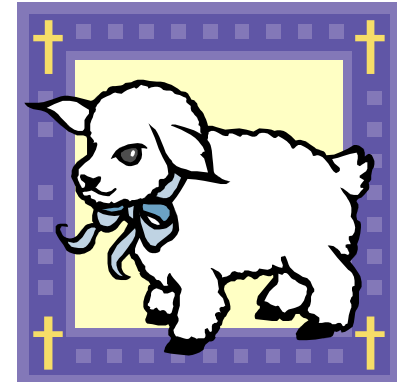
Box 1700

Abbotsford, BC

V2S 7E7

LAMB'S INN NURSERY

AGES 0-2



Director: Sarah Dueck

WELCOME TO LAMB'S INN NURSERY



On behalf of CLCC, I extend a warm welcome to you and your family. Our goal is to provide quality care for your child with his/her best interest in mind.

By offering our workers information and feedback, you will help us to operate a safe, efficient and creative nursery. If you have any questions, concerns, or innovative ideas, please feel free to discuss them with me.

We are happy your family has joined us, and we hope you will be blessed by our friendliness, efficiency, and excellent service.

Sarah Dueck

Early Childhood Ministries Director
604-504-0803 (home office)
sarahdueck@uniserve.com

Our Philosophy:

For babies and toddlers 0-24 months. It is a warm and supportive place with people who are dedicated to making small children feel secure and happy. As a service in the church, we maintain a safe, nurturing environment for the children in our care, providing for healthy intellectual, physical, emotional, social, and spiritual growth. We desire that each child develops a strong, positive self-esteem and identity. Therefore, each child will be loved, treated with respect and dignity, and be shown that he or she has special and unique God given qualities to share with the world.

Goals:

- ◆ Teach and demonstrate God's love to your child.
- ◆ Provide a safe environment for children in our care.
- ◆ Give children opportunities to participate in activities designed for their age groups and developmental levels.
- ◆ Love and support the children, helping each one develop healthy attitudes towards themselves and others.
- ◆ Reinforce Godly family values.

In order to provide safe and loving care for your child please:

- 1** Attach the name tag provided to your child's back.
- 2** Please label everything (bottle, diaper bag, pacifier, etc) with labels provided.
- 3** Register and/or sign in your child. Be sure all information about your child is up to date.
- 4** Please take a number ID tag that matches your child's number on the sign in sheet. This tag is required in order for you child to be released from the nursery. Upon departure please sign your child out.
- 5** Parents are discouraged from entering the nursery unless absolutely necessary. (ie: your child will not stay without you or you are a nursing mom)
- 6** We do change diapers. Please provide nursery staff with the necessary supplies.
- 7** Cheerios or unsalted soda crackers will be provided. Please be sure the Nursery staff are aware of any food allergies.